



Real People. Real Solutions.

Engineer's Report for

# Annexation

Drainage District No. 21 West  
Worth County, Iowa

2019

**Submitted by:**

Bolton & Menk, Inc.  
218 11th St SW Plaza  
Spencer, IA 51301  
P: 712-580-5075

# Certification

Engineer's Report

for

Annexation

Drainage District No. 21 West  
Worth County, Iowa  
P11.107508

2019



I hereby certify that this plan, specification or report was prepared by me or under my direct supervision, and that I am a duly Licensed Professional Engineer under the laws of the State of Iowa. My renewal date is December 31, 2020.

By: Jonathan P. Rosengren  
Jonathan P. Rosengren, P.E.  
License No. 21661

Date: April 25, 2019

**ENGINEER'S REPORT  
ANNEXATION  
DRAINAGE DISTRICT NO. 21 WEST  
WORTH COUNTY, IOWA  
2019**

The Worth County Board of Supervisors has appointed Bolton & Menk, Inc. as engineer to investigate and recommend the annexation of benefited lands not now included in Drainage District No. 21 West. The enclosed map shows the area of land now assessed for benefits from the DD 21 W facilities and the 2.6 acres now recommended for annexation.

During the course of the investigation the engineer reviewed each parcel under consideration for benefit. Extensive drainage district records on file in the County Auditor's office and publicly available aerial photographs, land surface elevations and soils information were reviewed and utilized to determine the elevation and condition of drainage with relation to the several facilities of Drainage District No. 21 West. It is this engineer's opinion that all of the land areas shown in yellow hatching on the included map, totaling approximately 2.6 acres, are tributary to the existing DD 21 W facilities and are materially benefited by the facilities of Drainage District No. 21 West. Material benefits for all parcels include an improved drainage outlet provided and brought closer to enable removal of excess surface and/or subsurface waters.

Based on the information available to the engineer it is recommended that the board of supervisors pursue the annexation of the several benefiting parcels described herein. Listed for each forty acre or smaller parcel being recommended for annexation are the owner(s) of record, the legal description and the approximate number of benefited acres within the parcel. Actual benefited acres in each parcel will be established at the time the lands are classified. Benefiting county road rights-of-way which adjoin the annexed parcels, will also be made eligible for assessment by this action. A schedule of lands benefited by the existing DD 21 W facilities and recommended for annexation is included with this report.

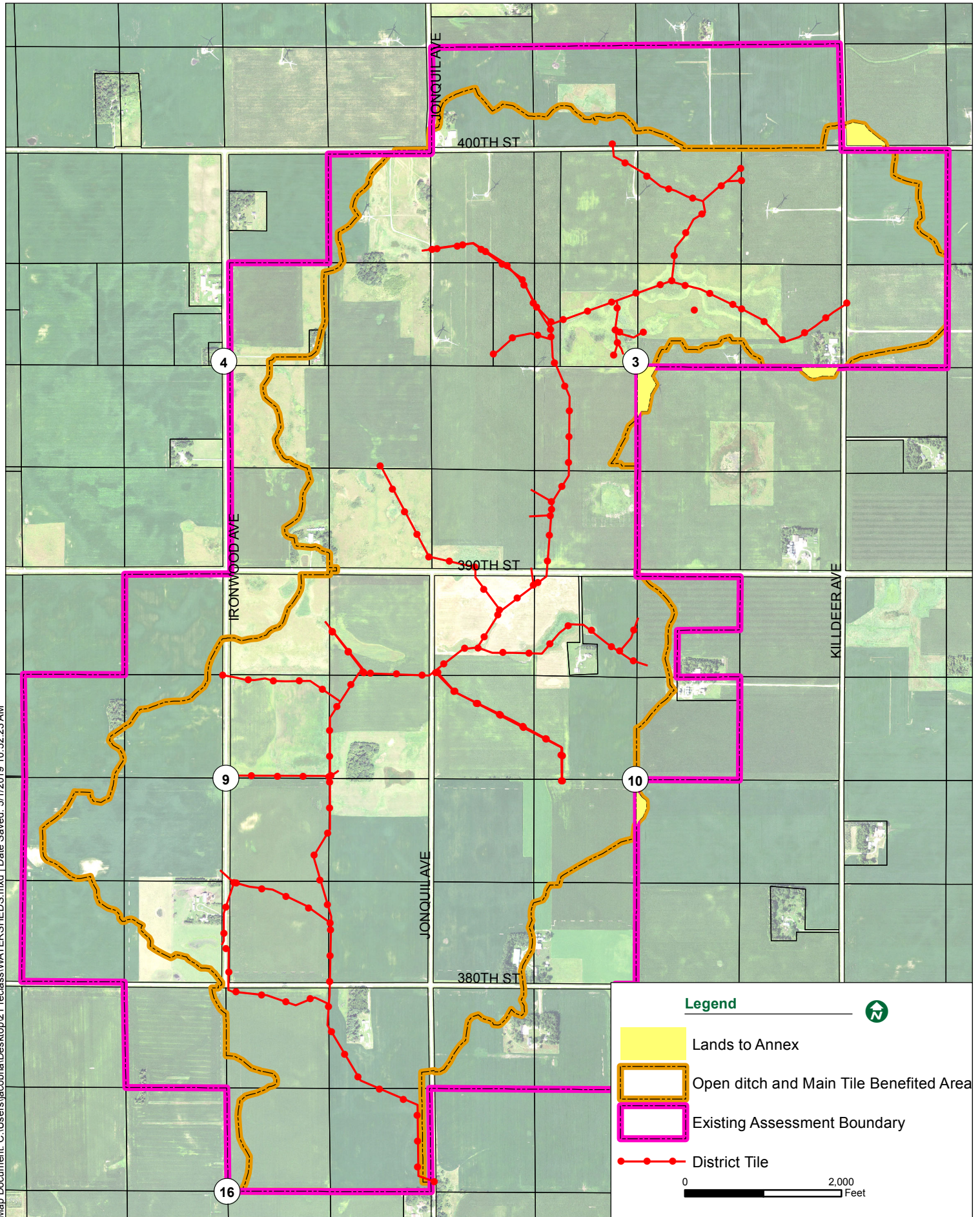
Annexation of the lands recommended herein is considered feasible, practicable and for the public good. It is therefore recommended that the Board of Supervisors of Worth County take appropriate steps to accomplish the following:

1. Tentatively approve this report.
2. Subject to qualified legal guidance, schedule and give formal notice of and conduct the required public hearing or hearings as needed.
3. Annex to Drainage District No. 21 West the lands ultimately determined to be benefited.

Respectfully submitted,  
**Bolton & Menk, Inc.**



Map Document: C:\Users\jacobha\Desktop\21 reclass\WATERSHEDS.mxd | Date Saved: 5/1/2019 10:52:23 AM



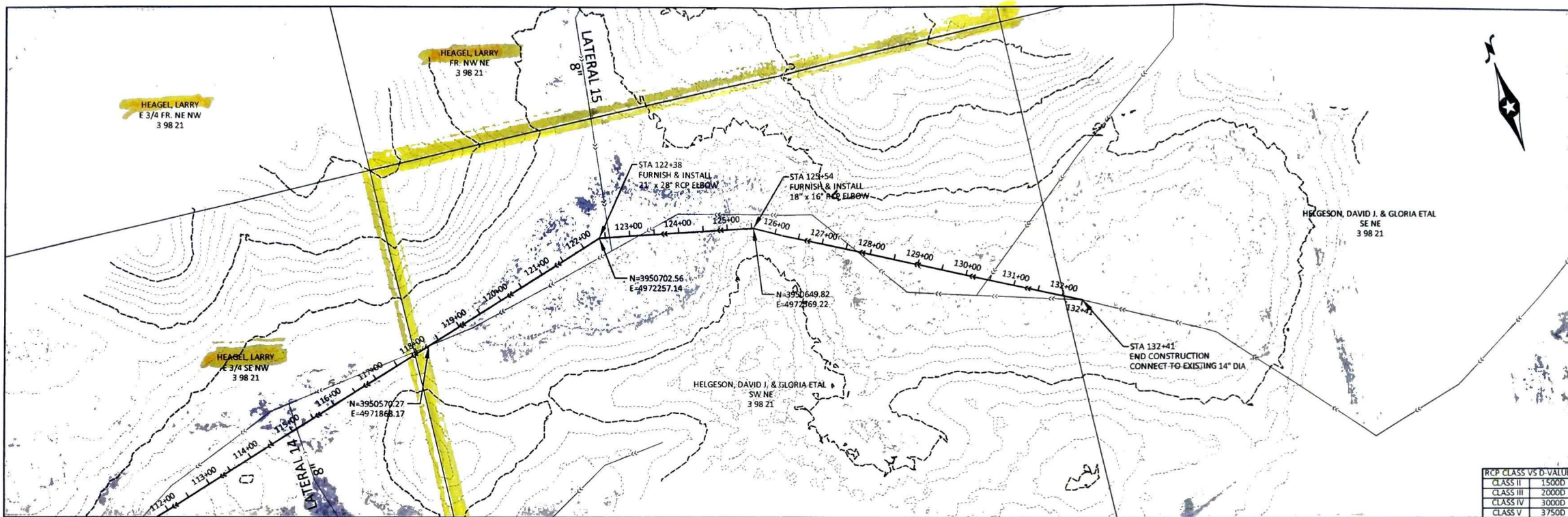
**LANDS RECOMMENDED FOR ANNEXATION  
DRAINAGE DISTRICT NO. 21 West  
WORTH COUNTY, IOWA  
2019**

<b>Deedholder(s)</b>	<b>Parcel Number</b>	<b>Legal Description</b>	<b>S-T-R</b>	<b>Benefited Area (ac)</b>
FABER, FRED D. TRUST 1/2 INT & HELEN F. TRUST 1/2 INT	1003400001	NW SE	3-98-21	0.3
FABER, FRED D. TRUST 1/2 INT & HELEN F. TRUST 1/2 INT	1003400002	NE SE	3-98-21	0.5
TWEETEN, STANLEY B. TRUST	0635300003	SW SW	35-99-21	0.8
ANDERSON, MILLARD N & CYNTHIA 1/2 INT	1010400001	NW SE	10-98-21	1.0
<b>Totals</b>				<b>2.6</b>

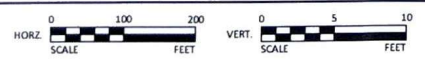
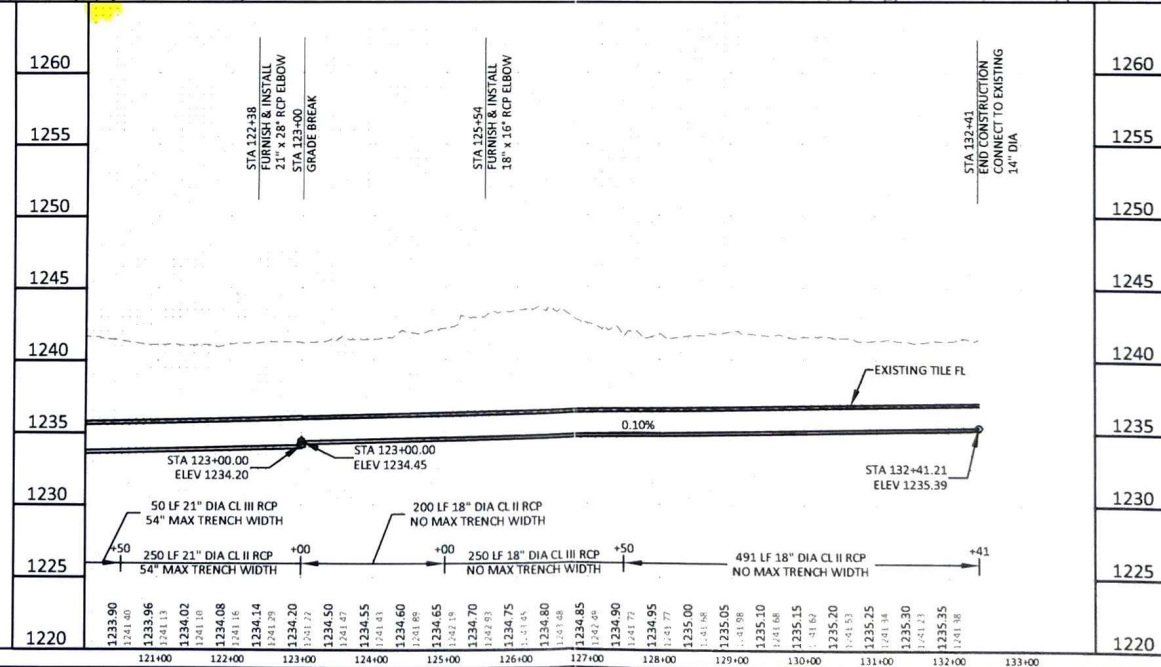








RCP CLASS VS D-VALUE	
CLASS II	1500D
CLASS III	2000D
CLASS IV	3000D
CLASS V	3750D



© Bolton & Menk, Inc. 2014. All Rights Reserved.  
 H:\WORTH\WORTH\11107508\11107508.dwg 3/12/15 4:39 pm

DESIGNED: JPR  
 DRAWN: TJM  
 CHECKED: JPR

**BOLTON & MENK, INC.**  
 Consulting Engineers & Surveyors  
 MANKATO, MN FAIRMONT, MN SLEEPY EYE, MN BURNSVILLE, MN WILLMAR, MN  
 CHASKA, MN RAMSEY, MN MAPLEWOOD, MN BAXTER, MN ROCHESTER, MN  
 AMES, IA SPENCER, IA DES MOINES, IA FARGO, ND

REV	BY	DATE

WORTH COUNTY, IOWA  
 DRAINAGE DISTRICT DITCH NO. 21 TILE IMPROVEMENTS  
**PLAN AND PROFILE - MAIN TILE**  
 120+00 - 134+00

SHEET  
**D.07**