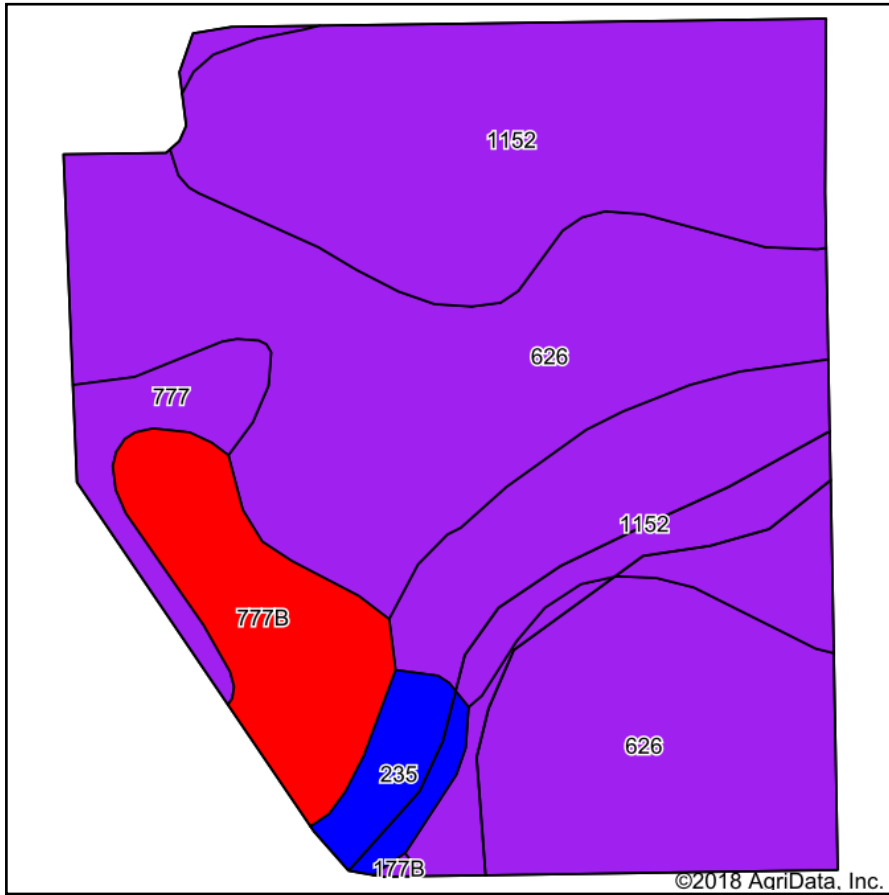
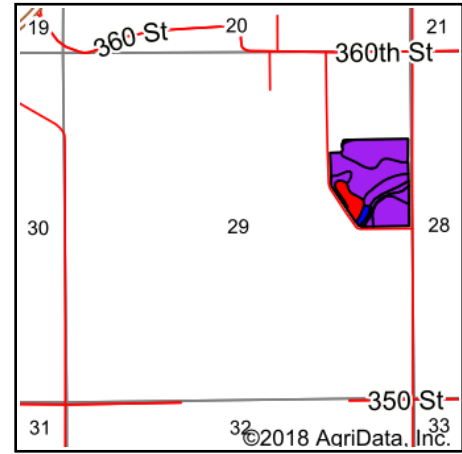


Soils Map



Soils data provided by USDA and NRCS.



State: **Iowa**
 County: **Mitchell**
 Location: **29-98N-15W**
 Township: **Douglas**
 Acres: **31.83**
 Date: **10/31/2018**



Maps Provided By:



Area Symbol: IA131, Soil Area Version: 24

| Code | Soil Description | Acres | Percent of field | CSR2 Legend | Non-Irr Class *c | CSR2** | CSR | Bromegrass alfalfa | Bromegrass alfalfa hay | Corn | Kentucky bluegrass | Oats | Smooth bromegrass | Soybeans | *n NCCPI Soybeans |
|-------------------------|--|-------|------------------|-------------|------------------|-------------|-------------|--------------------|------------------------|-------------|--------------------|-------------|-------------------|-------------|-------------------|
| 626 | Hayfield loam, 0 to 2 percent slopes, rarely flooded | 14.58 | 45.8% | | lls | 53 | 65 | | | | | | | | 56 |
| 1152 | Marshan clay loam, 0 to 2 percent slopes, rarely flooded | 12.35 | 38.8% | | llw | 54 | 66 | 5 | 3 | 90 | 2 | 57 | 4 | 30 | 58 |
| 777B | Wapsie loam, 2 to 5 percent slopes | 2.73 | 8.6% | | lle | 50 | 53 | | | | | | | | 40 |
| 777 | Wapsie loam, 0 to 2 percent slopes | 1.21 | 3.8% | | lls | 55 | 58 | | | | | | | | 41 |
| 235 | Coland-Turlin complex, 0 to 2 percent slopes | 0.96 | 3.0% | | llw | 81 | 80 | | | | | | | | 90 |
| Weighted Average | | | | | | 54.1 | 64.5 | 1.9 | 1.2 | 34.9 | 0.8 | 22.1 | 1.6 | 11.6 | *n 55.9 |

**IA has updated the CSR values for each county to CSR2.

*n: The aggregation method is "Weighted Average using major components"

*c: Using Capabilities Class Dominant Condition Aggregation Method

Soils data provided by USDA and NRCS.